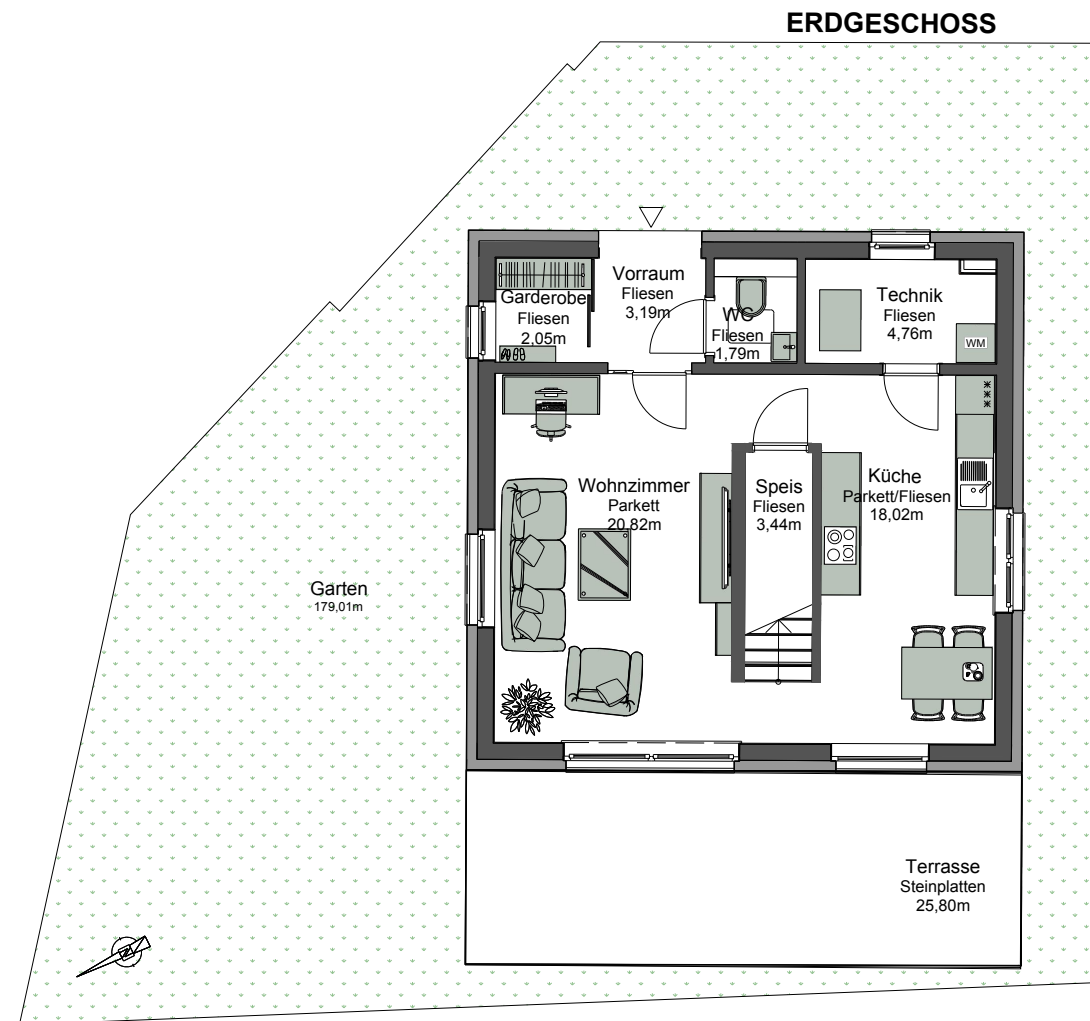


## HAUSNUMMER 1.4

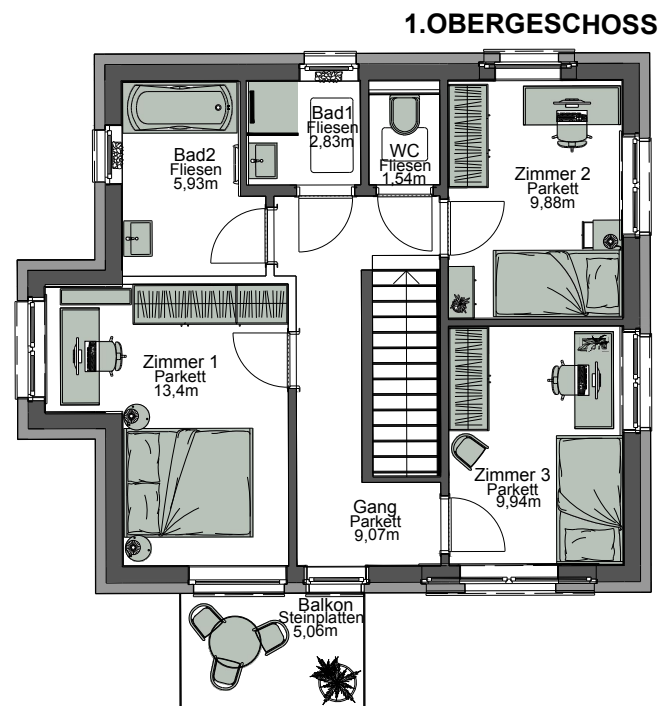
### EG

Vorraum	3,19	m <sup>2</sup>
Garderobe	2,05	m <sup>2</sup>
WC	1,79	m <sup>2</sup>
Wohnzimmer	20,82	m <sup>2</sup>
Küche	18,02	m <sup>2</sup>
Speis	3,44	m <sup>2</sup>
Technik	4,76	m <sup>2</sup>

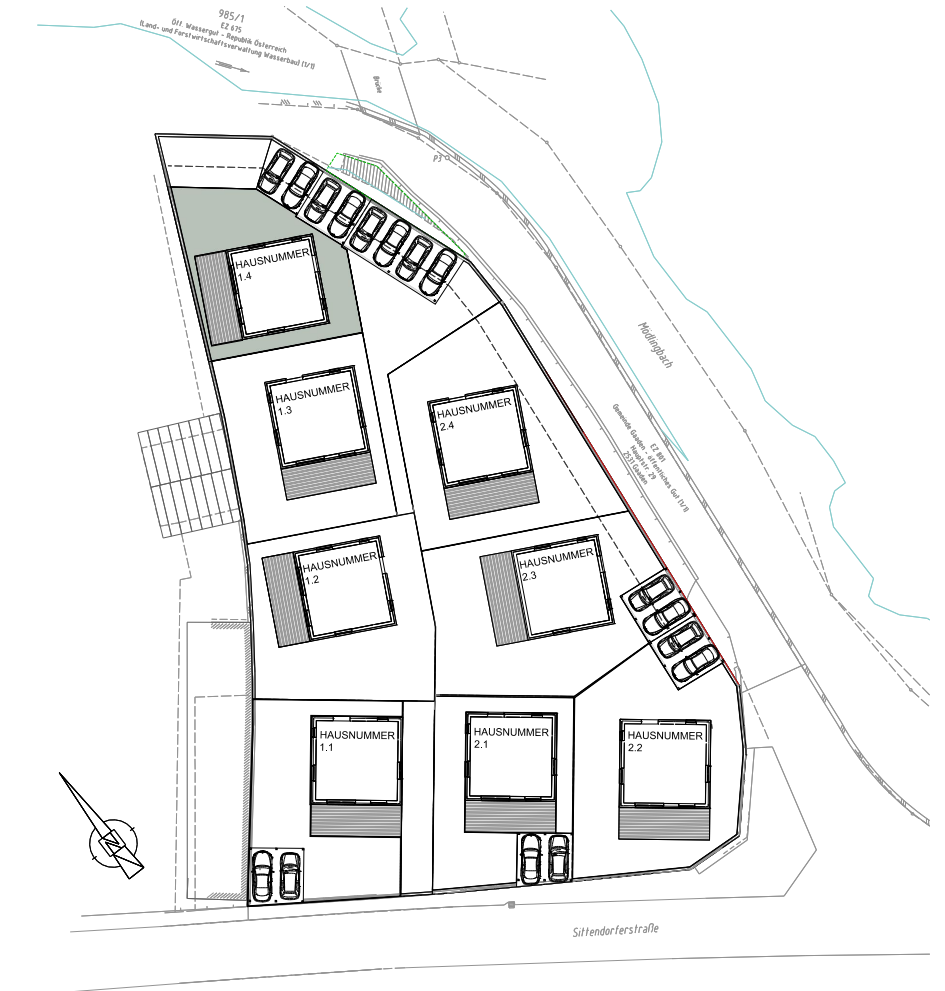


### OG

Gang	9,07	m <sup>2</sup>
Bad1	2,83	m <sup>2</sup>
Bad2	5,93	m <sup>2</sup>
WC	1,54	m <sup>2</sup>
Zimmer 1	13,40	m <sup>2</sup>
Zimmer 2	9,88	m <sup>2</sup>
Zimmer 3	9,94	m <sup>2</sup>
<b>WNFL Gesamt</b>	<b>106,66</b>	<b>m<sup>2</sup></b>



## 8 EINFAMILIENHÄUSER SITTENDORFERSTRASSE 26, 2531 GAADEN



### Freiflächen:

Garten	179,01	m	2
Terrasse	25,80	m	2
Balkon	5,06	m	2
<b>Summe</b>	<b>209,87</b>	<b>m</b>	<b>2</b>

**KFZ Stellplätze x 2**